

**Order code:** GN4580

## Basic information

**Brand:** Gelco

**Series:** LORO

## Size

**Width:** 800 mm

**Height:** 2000 mm

## Properties

**Profile colour:** Chrome - polished aluminum

**Shape:** Alcove door

**Type of opening:** Folding door

**Opening direction:** Versatile

**Opening width:** 670 mm

**Glass colour:** TRANSPARENT glass

**Glass finish:** Coated glass

**Glass thickness:** 6 mm

**Installation width from:** 775 mm

**Installation width up to:** 805 mm

**Properties:** Frameless design

**Weight / Piece:** 30.0 kg

**Packaging:** 1 Piece

**Warranty:** 3 years



## Spare parts

LORO Hinges for Folding Door (Order code: NDGN08)

LORO Lower Seal Set with End Caps (Order code: NDGN03)

LORO Shower Door Handle (Order code: NDGN06)

LORO Hinges for Pivot Door, lower + upper (Order code: NDGN12)

LORO Mounting Kit (Order code: NDGN01)

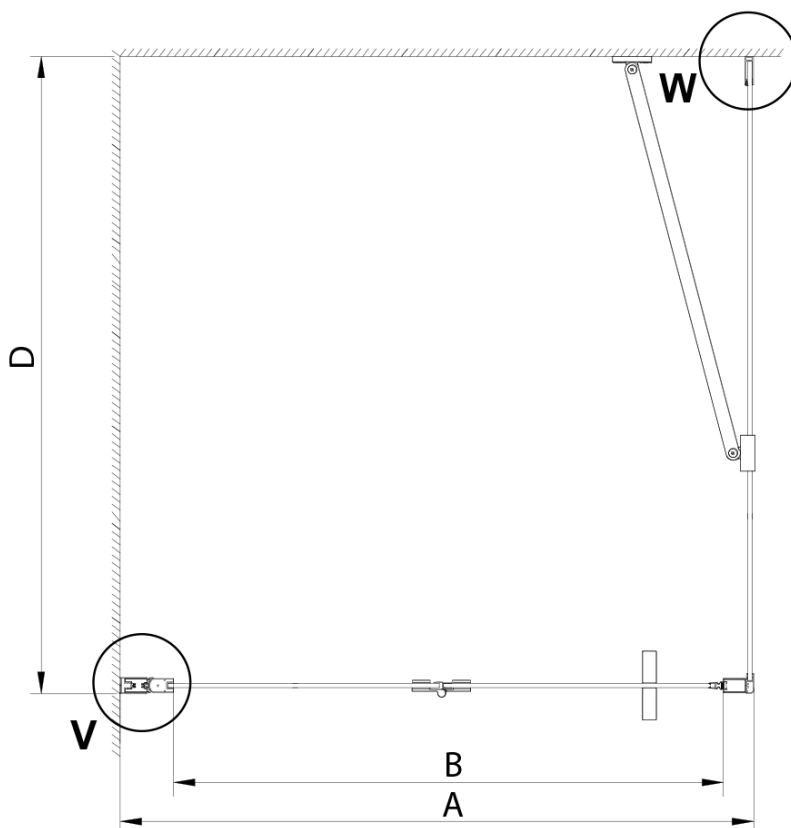
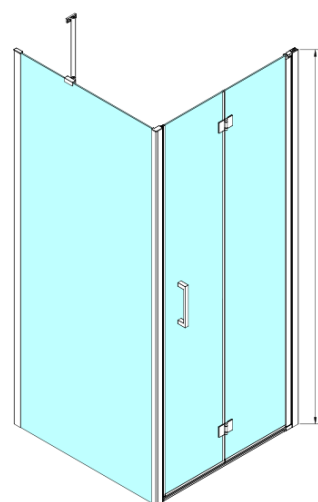
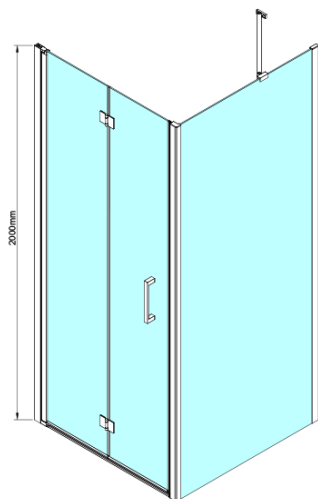
LORO magnetic profile (Order code: NDGN05)

Bottom seal for door, glass 6mm, 1000mm (Order code: NDGN04)

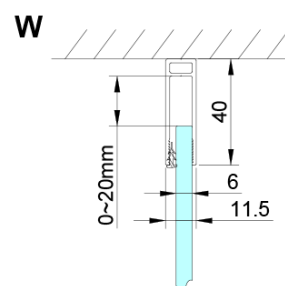
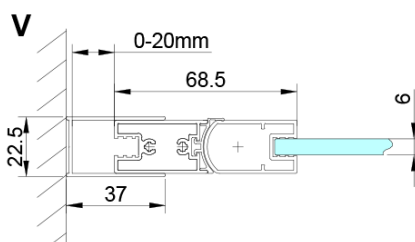
Set of vertical seals between glass 6mm (Order code: NDGN07)

Technical sheet

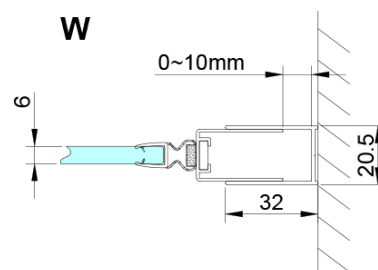
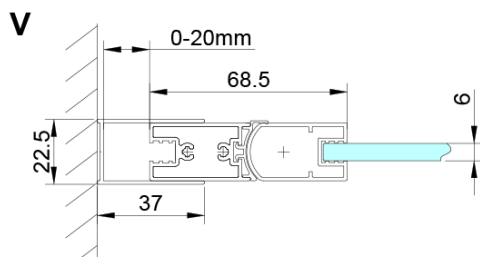
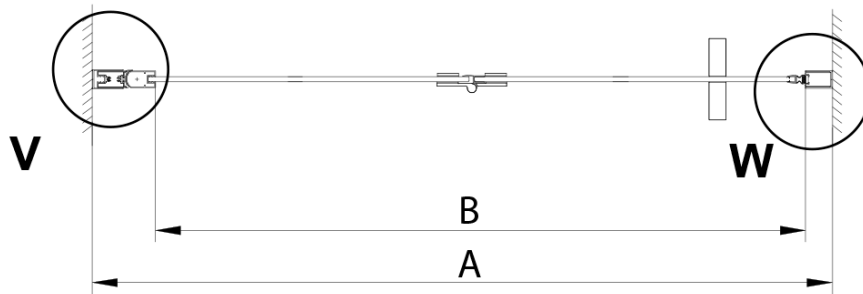
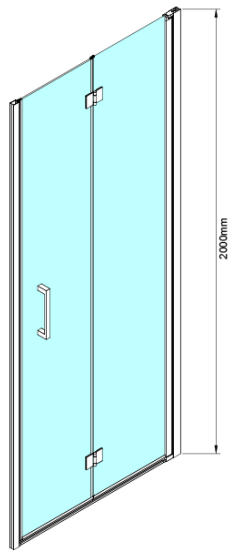
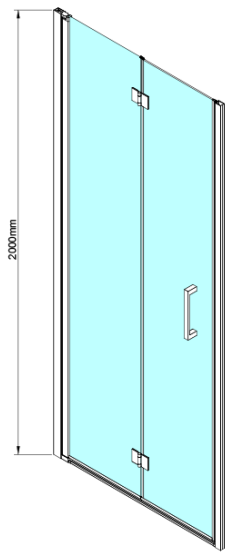
GN4570/GN4580/GN4590 + GN3580/GN3590/GN3510/GN3512



Model	A	B	D
GN4570	685-715	570	
GN4580	785-815	670	
GN4590	885-915	770	
GN3580			785-805
GN3590			885-905
GN3510			985-1005
GN3512			1185-1205



GN4570/GN4580/GN4590



Model	A	B
GN4570	675-705	570
GN4580	775-805	670
GN4590	875-905	770